

9



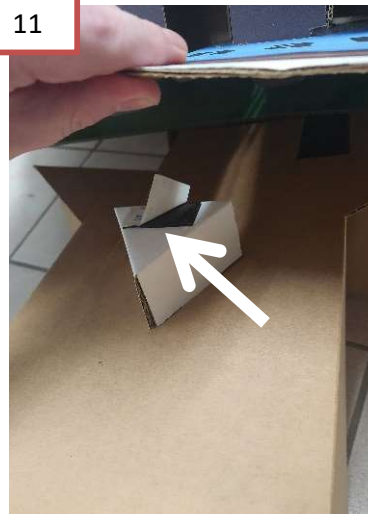
Attach the Bear to the Background by folding over flaps of the 3-sided connectors, align tabs with corresponding slots, and push tabs through to snap into place.

10



Connect all four places to Background using process in previous step.

11



Gently lift back the lower part of the Bear foreground. Remove the backing on the twin stick tape on the connector underneath. Press down on the Bear foreground over the tape so it sticks and foreground lays evenly.

12



Punch out letter 'O' and attach remaining 3-sided connector to its back side using a bolt. Punch out remaining letters.

13



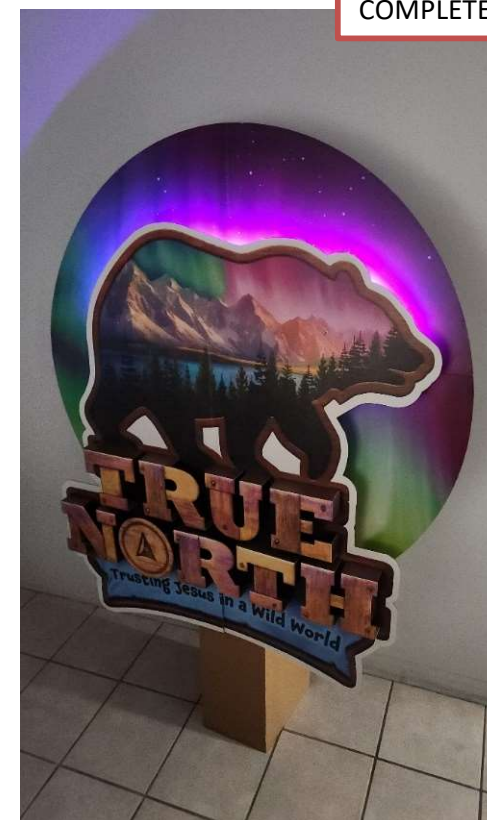
Attached letters to display by folding over flaps and inserting tabs into corresponding slots spelling 'TRUE NORTH'.

14



Finished display.

COMPLETE



Use power switch on battery pack to turn on/off the light sequence.